



INTERNATIONAL STUDENT HANDBOOK Ecole Nationale d'Ingénieurs de TARBES - FRANCE



You will find in this handbook the useful information to prepare your stay
at the National Engineering School of Tarbes



Co-funded by
the European Union

WELCOME TO ENIT !

«At ENIT I was able to broaden my knowledge. This allowed me to grow professionally and personally. ENIT is a good structure that offers very good training in my field (civil engineering). In addition, the institution offers very important support to international students. Finally, it was a wonderful experience that I will never forget. »



Gustavo, Brazilian student in semester of study

« Since I have been at ENIT, I have a very pleasant and fun stay! Everyone is very nice and I felt at home. Moreover, ENIT is a very interesting School, which has many assets I can use in my professional career! »



Rocío, Argentinian student in double degree

« I took part in the EPS, European Project Semester in Tarbes. We work all in English in international groups on a real project. At ENIT there is a close contact between students and professors. I appreciated the help of the International Relations Office: we felt in good hands. Thanks to this stay, I met new friends from all around the world. »



Lisa, German student in E.P.S.

« I loved ENIT since my arrival in 2015. The training is very complete and the courses are interesting and enjoyable. My work was facilitated (follow courses in French), thanks to the available professors, to my classmates who helped me during the courses and mainly thanks to the International Relations team, who welcomed me very well and answered all my questions and difficulties. »



Luana, Brazilian student in double degree

TABLE OF CONTENTS



1.1 BIENVENUE EN FRANCE	4	2.1 ACADEMIC CALENDAR	10	3.1 TARBES TRANSPORTATION	15
1.2 TRAVEL TO TARBES	5/6	2.2 LIBRARY	11	3.2 MAIN PLACES IN TARBES	16
1.3 ADMINISTRATIVE FORMALITIES	7	2.3 SPORTS ACTIVITIES	12	3.3 VISITING AROUND TARBES	17
1.4 ACCOMMODATION	8	2.4 INTERNATIONAL CLUB	13		
1.5 HEALTH AND INSURANCE	9	2.5 WHERE TO EAT	14		

1 BIENVENUE EN FRANCE ★★



The "BIENVENUE EN FRANCE" label, attesting to the quality of the welcome given to international audiences, was awarded to ENIT by decision of the Labelling Commission on 10 November 2020. The quality of the reception of international students is, in particular, a fundamental issue for the internationalisation and attractiveness of our higher education.

The "BIENVENUE EN FRANCE" label is awarded to institutions wishing to enhance their hosting facilities. It is awarded for 4 years by Campus France and validated by an independent commission.

1.1 TRAVEL TO TARBES: CONSIDER GREEN POSSIBILITIES



Train, bus, car pool

- To travel **by train** within France, you can check prices and schedules at on the [SNCF Connect](#) website (you can tick direct transport to avoid connections).
- [Interrail](#) is also an option to consider when travelling across Europe by train.
- [Trainline](#), [Blablacar](#) or [SNCF Connect](#) all offer both train or bus / car options to travel.

Give those websites a look to find out what works best for you and enjoy the ride across our beautiful Europe.

Bus only



- Like everywhere in Europe, [Flixbus](#) remains a good option to come to Tarbes AND to travel in the region once you are here.
- [Busbud](#) is an other **bus** travelling provider that you may use to come to Tarbes.

Nowadays all buses have Wifi and electricity so you can have a nice travel and no luggage weight restrictions.

1 PREPARE YOUR STAY IN FRANCE



1.2 TRAVEL TO TARBES: IF YOU ARE COMING FROM FAR AWAY

Paris CDG Airport

If you want to visit Paris upon your arrival in France, you have a few options to go to the **center of Paris** :

<http://easycdg.com/transport/buses-coaches-trains-taxis-paris-cdg-airport-charlesdegaulle/>

To come **by train** from Paris, please check prices and schedules at :

<https://uk.voyages-sncf.com/en/#/>

(you can tick direct transport to avoid connections)

You can also take a domestic flight to the airports of Toulouse - Blagnac (TLS), Pau-Pyrénées (PUF), or Tarbes-Lourdes-Pyrénées (LDE), from the following 2 airports :

- Paris Orly (ORY)
- Paris Roissy Charles de Gaulle (CDG)



Toulouse Blagnac Airport

If you want to visit Toulouse upon your arrival in France, you can reach the **center of Toulouse** :

<http://www.toulouse.aeroport.fr/en/passengers/to-and-from/public-transport>

You will find in the link below Toulouse transportation network:

<https://www.tisseo.fr/en/home>

To get to Tarbes directly, the airport shuttle « **La Navette aéroport** » will drive you to the railway station to catch a train :

<https://www.tisseo.fr/en/airport-shuttle>



1.2 TRAVEL TO TARBES: IF YOU ARE COMING FROM FAR AWAY

Pau – Pyrénées Airport

If you wish to visit Pau upon your arrival, you can take the bus line "**Idelis 10**". It connects the Pau-Pyrenees Airport to the city center. This shuttle runs from Monday to Saturday, from 7:00 to 19:00.

The Idelis shuttle bus runs a direct hourly service to Pau train station from Pau Airport.

If you arrive after 19:45, on a Sunday, or on a bank holiday, you will have to take a **taxi**.

You will find more information at :

<http://www.pau.aeroport.fr/airport/acces/the/taxis>



Tarbes – Lourdes – Pyrénées Airport

Tarbes-Lourdes-Pyrenees airport is just 10km far from the center of Tarbes.

The bus lines TLP Mobilités n°**TL** and n°**T7** connect the airport to the train station of Tarbes (near the city center), for 1€. To view the timetables, click on the following link :

<https://www.tlp.aeroport.fr/bus-shuttles>



1.3 FORMALITIES

○ Before your departure

✓ **Passport**

For non-European students, you will need a passport valid for the entire period of your stay in France. For citizens of the European Union, a valid identity card is enough.

✓ **Visa**

You will have to apply for a visa at the consulate or at the French Embassy in your country. To do so, the International Relations Office will send you an invitation letter once your application is accepted.

✓ **Birth certificate**

You will all need a birth certificate in the language of origin + a version officially translated in French (preferably a document with an issuing date not exceeding 3 months at your arrival).

○ At your arrival

The **International Relations Office** will help you to comply with all the French formalities :

- ENIT registration form
- Opening a French bank account + accommodation/liability insurance
- Health cover and additional healthcare
- Application for a residence permit (OFII)
- Etc.

○ Documents

Please make sure you bring and have a scan of :

- Passport and/or ID card
- Passport photos
- European Health Insurance Card (for EU citizens)
- Birth certificate



1.4 ACCOMMODATION

The International Relations Office will support you in your accommodation researches:

- When possible, a room at the campus students' residence (CROUS) will be offered to you.
- Shared or individual rentals are also available. We will try to get the best choice possible according to your preferences.

(Once your application is validated you will receive an accommodation form to indicate your preferences.)



Student Residence in Tarbes (CROUS)

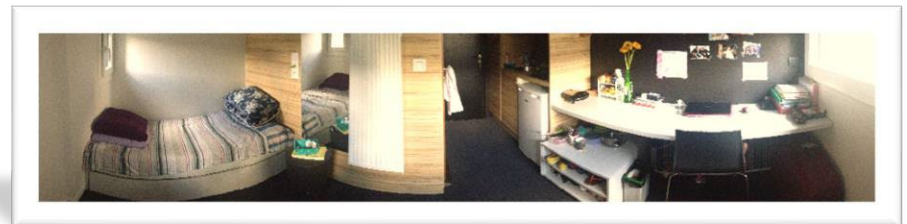
Located 200 meters walk from ENIT

○ **Approximated range price**

The « **studette** » is a room at the campus residence including small kitchen, shower with toilet and internet connection: 318 euros* per month. Towels, sheets / blanket and dishes will not be provided.

Security deposit: 318 euros at your arrival (refunded at the check out).

* Prices may vary from year to year



« studette » panoramic picture

○ **Shared rental price range**

It is also possible to share a flat with other students, the rent can vary from 315€ to 380€ per person/month (the international relations office can get you in touch with other students looking for roommates).



1.5 HEALTH AND INSURANCE



○ Health cover

In France, student healthcare is compulsory.

○ For European students :

Before leaving, you must get your European Health Insurance Card to benefit from the public healthcare in France :

http://www.cleiss.fr/particuliers/ceam_en.html

○ For non-European students :

The International Relations Office will help you during the compulsory registration procedure to the student healthcare.

○ Additional Health care

It's highly recommended to subscribe a personal complementary health insurance (the cost depends on the contract type).

○ Accommodation/liability insurance

How to get this insurance?

Many banks offer you an "insurance pack" when opening your French bank account. The average cost is 35 euros per semester (the cost depends on the type and the size of your housing).





2.1 ACADEMIC CALENDAR



Calendrier universitaire 2023-2024 du 30 Août 2023 au 31 août 2024 Formation initiale sous statut étudiant (FISE)

	Août	Septembre	Octobre	Novembre	Décembre	Janvier	Février	Mars	Avril	Mai	Juin	Juillet/Août
LUNDI	28	4	11 18 25	2 9 16 23	30 6 13 20	27 4 11 18 25	1 8 15 22 29	5 12 19 26	4 11 18 25	1 8 15 22 29	6 13 20 27	3 10 17 24 1
MARDI	29	5	12 19 26	3 10 17 24	31 7 14 21	28 5 12 19 26	2 9 16 23 30	6 13 20 27	5 12 19 26	2 9 16 23 30	7 14 21 28	4 11 18 25 2
MERCREDI	30	6	13 20 27	4 11 18 25	1 8 15 22 29	6 13 20 27	3 10 17 24 31	7 14 21 28	6 13 20 27	3 10 17 24	1 8 15 22 29	5 12 19 26 3
JEUDI	31	7	14 21 28	5 12 19 26	2 9 16 23 30	7 14 21 28	4 11 18 25	1 8 15 22 29	7 14 21 28	4 11 18 25	2 9 16 23 30	6 13 20 27 4
VENDREDI	1	8	15 22 29	6 13 20 27	3 10 17 24	1 8 15 22 29	5 12 19 26	2 9 16 23 30	5 12 19 26	3 10 17 24	31 7 14 21 28	5
SAMEDI	2	9	16 23 30	7 14 21 28	4 11 18 25	2 9 16 23 30	6 13 20 27	3 10 17 24	2 9 16 23 30	6 13 20 27	4 11 18 25	1 8 15 22 29 6
N° semaine	35	36	37 38 39 40	41 42 43 44	45 46 47 48 49 50 51 52	1 2 3 4 5	6 7 8 9 10 11 12 13 14 15 16 17 18 19 20 21 22 23 24 25 26 27 28 29 30 31					

S1 S2X S4X S5 SSAST M11 M12X M21
1 2 3 4 5 6 7 8 9 10 11 12 13 14 15 DS R J

S1X S2 S4 S5X M11X M12 M21X
1 2 3 4 5 6 7 8 9 10 11 12 13 14 15 16 DS R J

S3 Stage S3 du 13/11/2023 au 19/01/2024
1 2 3 4 5 6 7 8 9 10 11 12 13 14 15 16 17 18 19 20 21 22 23 24 25 26 27 28 29 30 31 J

S3x Stage du 15/04/2023 au 21/06/2024
1 2 3 4 5 6 7 8 9 DS 1 2 3 4 5 6 7 8 9 10 11 12 13 14 15 16 17 18 19 20 21 22 23 24 25 26 27 28 29 30 31 J

Parcours BUT3 / ENIT
1 2 3 4 5 6 7 8 9 10 11 12 13 14 15 16 17 18 19 20 21 22 23 24 25 26 27 28 29 30 31 32 33 34 35 36 37 38 39 40 41 42 43 44 45 46 47 48 49 50 51 52 53 54 55 56 57 58 59 60 61 62 63 64 65 66 67 68 69 70 71 72 73 74 75 76 77 78 79 80 81 82 83 84 85 86 87 88 89 90 91 92 93 94 95 96 97 98 99 100 101 102 103 104 105 106 107 108 109 110 111 112 113 114 115 116 117 118 119 120 121 122 123 124 125 126 127 128 129 130 131 132 133 134 135 136 137 138 139 140 141 142 143 144 145 146 147 148 149 150 151 152 153 154 155 156 157 158 159 160 161 162 163 164 165 166 167 168 169 170 171 172 173 174 175 176 177 178 179 180 181 182 183 184 185 186 187 188 189 190 191 192 193 194 195 196 197 198 199 200 201 202 203 204 205 206 207 208 209 210 211 212 213 214 215 216 217 218 219 220 221 222 223 224 225 226 227 228 229 230 231 232 233 234 235 236 237 238 239 240 241 242 243 244 245 246 247 248 249 250 251 252 253 254 255 256 257 258 259 260 261 262 263 264 265 266 267 268 269 270 271 272 273 274 275 276 277 278 279 280 281 282 283 284 285 286 287 288 289 290 291 292 293 294 295 296 297 298 299 300 301 302 303 304 305 306 307 308 309 310 311 312 313 314 315 316 317 318 319 320 321 322 323 324 325 326 327 328 329 330 331 332 333 334 335 336 337 338 339 340 341 342 343 344 345 346 347 348 349 350 351 352 353 354 355 356 357 358 359 360 361 362 363 364 365 366 367 368 369 370 371 372 373 374 375 376 377 378 379 380 381 382 383 384 385 386 387 388 389 390 391 392 393 394 395 396 397 398 399 400 401 402 403 404 405 406 407 408 409 410 411 412 413 414 415 416 417 418 419 420 421 422 423 424 425 426 427 428 429 430 431 432 433 434 435 436 437 438 439 440 441 442 443 444 445 446 447 448 449 450 451 452 453 454 455 456 457 458 459 460 461 462 463 464 465 466 467 468 469 470 471 472 473 474 475 476 477 478 479 480 481 482 483 484 485 486 487 488 489 490 491 492 493 494 495 496 497 498 499 500 501 502 503 504 505 506 507 508 509 510 511 512 513 514 515 516 517 518 519 520 521 522 523 524 525 526 527 528 529 530 531 532 533 534 535 536 537 538 539 540 541 542 543 544 545 546 547 548 549 550 551 552 553 554 555 556 557 558 559 560 561 562 563 564 565 566 567 568 569 570 571 572 573 574 575 576 577 578 579 580 581 582 583 584 585 586 587 588 589 590 591 592 593 594 595 596 597 598 599 600 601 602 603 604 605 606 607 608 609 610 611 612 613 614 615 616 617 618 619 620 621 622 623 624 625 626 627 628 629 630 631 632 633 634 635 636 637 638 639 640 641 642 643 644 645 646 647 648 649 650 651 652 653 654 655 656 657 658 659 660 661 662 663 664 665 666 667 668 669 670 671 672 673 674 675 676 677 678 679 680 681 682 683 684 685 686 687 688 689 690 691 692 693 694 695 696 697 698 699 700 701 702 703 704 705 706 707 708 709 710 711 712 713 714 715 716 717 718 719 720 721 722 723 724 725 726 727 728 729 730 731 732 733 734 735 736 737 738 739 740 741 742 743 744 745 746 747 748 749 750 751 752 753 754 755 756 757 758 759 760 761 762 763 764 765 766 767 768 769 770 771 772 773 774 775 776 777 778 779 780 781 782 783 784 785 786 787 788 789 790 791 792 793 794 795 796 797 798 799 800 801 802 803 804 805 806 807 808 809 810 811 812 813 814 815 816 817 818 819 820 821 822 823 824 825 826 827 828 829 830 831 832 833 834 835 836 837 838 839 840 841 842 843 844 845 846 847 848 849 850 851 852 853 854 855 856 857 858 859 860 861 862 863 864 865 866 867 868 869 870 871 872 873 874 875 876 877 878 879 880 881 882 883 884 885 886 887 888 889 890 891 892 893 894 895 896 897 898 899 900 901 902 903 904 905 906 907 908 909 910 911 912 913 914 915 916 917 918 919 920 921 922 923 924 925 926 927 928 929 930 931 932 933 934 935 936 937 938 939 940 941 942 943 944 945 946 947 948 949 950 951 952 953 954 955 956 957 958 959 960 961 962 963 964 965 966 967 968 969 970 971 972 973 974 975 976 977 978 979 980 981 982 983 984 985 986 987 988 989 990 991 992 993 994 995 996 997 998 999 1000

Stage S6x du 04/09/2023 au 19/01/2024
1 2 3 4 5 6 7 8 9 10 11 12 13 14 15 16 17 18 19 20 21 22 23 24 25 26 27 28 29 30 31 J

Stage S6 du 05/02/2024 au 21/06/2024
1 2 3 4 5 6 7 8 9 10 11 12 13 14 15 16 17 18 19 20 21 22 23 24 25 26 27 28 29 30 31 J

PFE S10x du 04/09/2023 au 26/01/2024
1 2 3 4 5 6 7 8 9 10 11 12 13 14 15 16 17 18 19 20 21 22 23 24 25 26 27 28 29 30 31 J

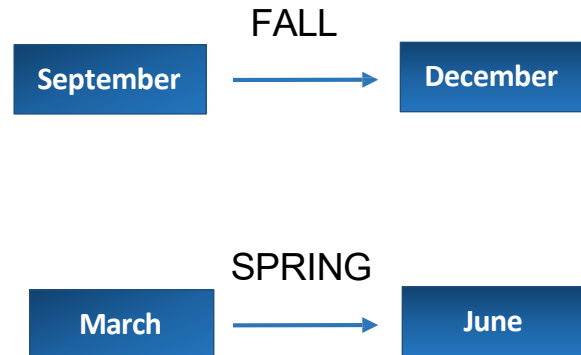
PFE S10 du 05/02/2023 au 28/06/2024
1 2 3 4 5 6 7 8 9 10 11 12 13 14 15 16 17 18 19 20 21 22 23 24 25 26 27 28 29 30 31 J

Legend:
 - Pré-rentrée S1 / SSAST (Pink)
 - Rentrée universitaire (début des cours) (Purple)
 - Inter semestre (Green)
 - Parcours BUT3 GMP / ENIT : semaine complète - le jeudi après midi les autres semaines (Grey)
 - Stage / PFE / Formation en entreprise (Yellow)
 - Vacances scolaires et jours fériés (Light Blue)
 - Stage intensif d'anglais / formations complémentaires / activités transverses (Orange)
 - DS Devoirs surveillés
 - R Rattrapages des DS
 - S Soutenances de stages
 - J Jurys de semestres

Academic Calendar

European Project Semester

The EPS semester "European Project Semester" lasts 15 weeks. There are 2 sessions per year : FALL and SPRING semester.



More info: <https://www.enit.fr/en/international-exchange/european-project-semester1-0.html>



Co-funded by the European Union

2.2 LIBRARY

○ Documentation

You can consult and borrow a large number of documents : paper and audio books, magazines, CDs, dubbed and/or subtitled DVDs, as well as a large electronic documentation covering the following areas :

- Scientific and technical documents in the fields of teaching and research of ENIT,
- Cultural documents (documentaries, novels, comics, etc.)
- Language learning methods and linguistic material (French, English, German, Spanish, Italian and Portuguese, etc)

Many other documents are also available in English.

○ French as a Foreign Language collection (FFL)

In complement to the FFL courses offered at ENIT, the exchange students will have access to different learning methods to perfect their French skills.

○ Self-service tools

- Online catalog
- 8 computers for students
- Loan of headphones
- Wi-fi access
- A copy machine (payment with loadable student card).



2.3 SPORT ACTIVITIES

○ Sport Association at ENIT

The Sport Association at ENIT welcomes students who want to practice one or more sports.

A **30 €** subscription* per year allows you to take part in sports activities organized by the sports office:

- In class: Mountain bike / Hiking / Rock climbing / Snowboard / Rafting.
- Outside the class: Golf / Swimming / Tennis / Badminton / Gym / Horse riding / Basketball / Handball / Volleyball / Football / Rugby / Dance and Fitness / Combat sport / Karting / Skiing course

*An additional financial participation may be required for some activities

○ Pierre de COUBERTIN gymnasium

You also have the possibility to access the gymnasium, from Monday to Thursday between 7 pm and 10 pm, within the framework of the activities organized by the Sport Association.



2.4 THE INTERNATIONAL CLUB

○ « Club International »

This Club is an association, composed of ENIT students. Their actions help exchange students to better integrate the School community and the city. They propose international parties, cultural trips in the region and other services/activities described hereafter.



○ The « Starter Pack »

The Starter Pack is a kit of equipment (dishes, blankets, ..) you can borrow to the International Club to help you settle down in Tarbes, in case your accommodation is not fully equipped.

It is valid during your stay at ENIT. A deposit is required and will be fully refunded at departure.

○ The « Buddy programme »

The Buddy programme is offered to create a link between new incoming students and home students.

They can exchange and share experience on social, cultural and academic matters.

Examples of « Buddy » activities :

- Campus presentation
- Locating nearby grocery and useful stores
- Answering questions about ENIT and the city of Tarbes



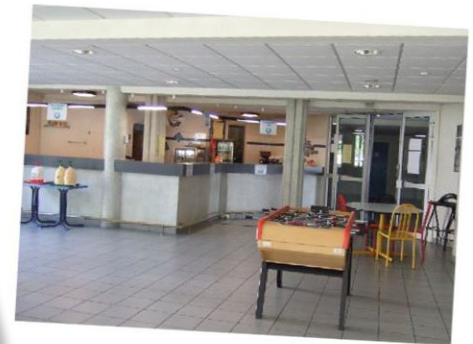
2.5 WHERE TO EAT

○ The campus restaurant

The Resto'U, also called the RU, is the students' refectory located on the campus. You can enjoy a full meal (starter, main dish, dessert) for 3,30€.

○ The cafeteria

You can also go to the cafeteria, located on the ground floor of the campus restaurant. You will find salads, paninis, sandwiches, pizzas, yogurts, fruits, muffins, drinks, etc.





2.6 ENIT'S GALA

Students in their 5th and last year of studies are in charge of the huge organization of the ENIT's annual Gala which takes place on the first Saturday of December.

It is the result of the collective investment of the whole class that coordinates logistics, project management, security, technical aspects... for a unique evening of celebration on a given theme.

The city of Tarbes is proud of its National School of Engineering, which is an integral part of the city and participates to many activities : this traditional event is hosted in the Parc des Expositions of Tarbes.

In short, the Gala is :

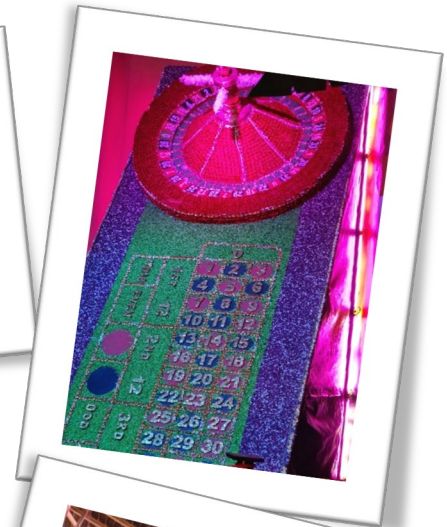
1 year of preparation

200 000 € of budget

3500 people

3000 m2 of carpeting

*Don't forget to book
your ticket on
<https://gala.enit.fr>*





© Service Communication Mairie de Tarbes

3.1 TARDES TRANSPORTATION NETWORK

○ Cycling in Tarbes

Tarbes is a city easily accessible by bikes, thanks to the 15km bike paths developed by the city.

▪ **Mob65**

Association that offers you bicycles at 5€ / month on presentation of your student card from the September 1st to June 30th.

The deposit is 100€. Go and visit them directly on site: 31

Rue Georges Lassalle, 65000 Tarbes

Opening hours:

Monday - Thursday: 08h- 12h / 14h - 17h

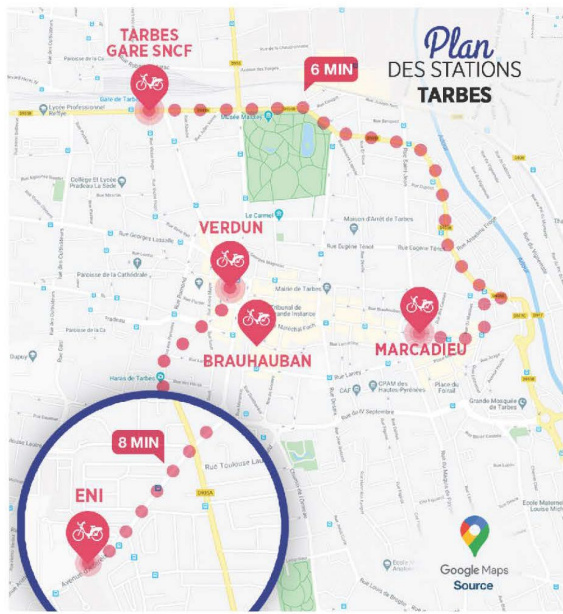
Friday: 08h - 12h

Needed documents:

- ID
- Student card
- 1 deposit check 100€



PLAN DES STATIONS VLS



3. The City of Tarbes



© Service Communication Mairie de Tarbes

3.1 TARDES TRANSPORTATION NETWORK

○ Bus network

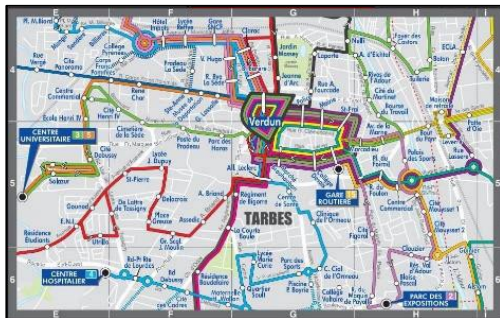
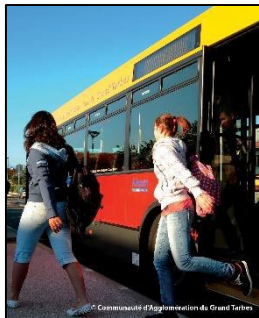
The city center is well connected to ENIT. The “TLP Mobilités” network offers several bus lines.

➤ Prices:

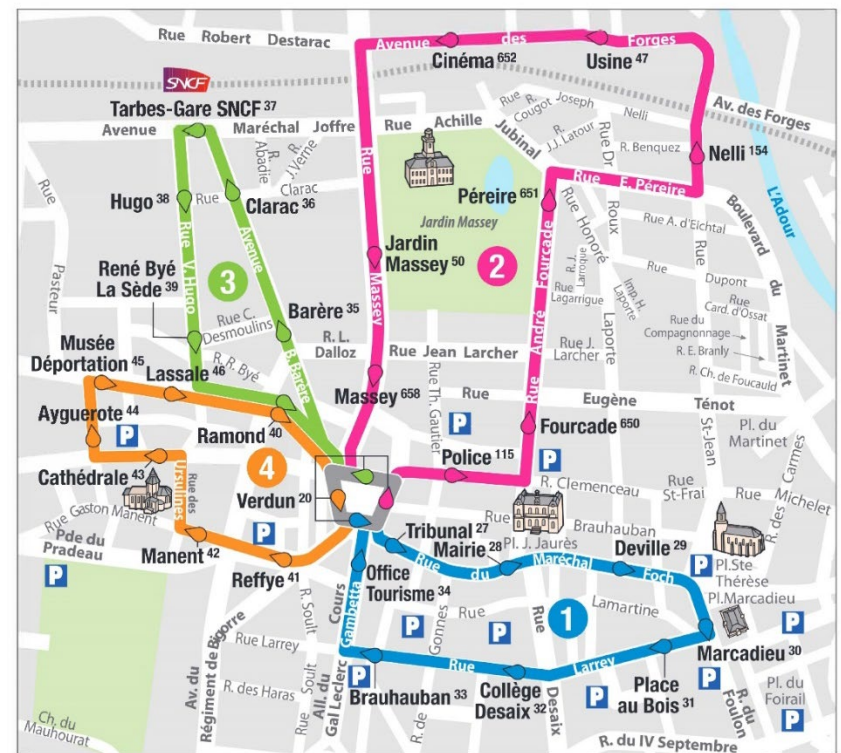
- Single ticket : 1€
- 10 trips card: 9€
- Subscription -25 years old students: 10€/month

The **public transportation network (buses)** and **self-service electric bicycles and cars** in Tarbes are managed by TLP Mobilités.

More information at : <https://www.tlp-mobilites.com/#>



NAVETTES CŒUR DE VILLE



Chaque navette circule en continu sur les 4 boucles dans l'ordre 1,2,3,4.
L'arrêt Verdun (en bleu) situé au niveau de l'agence immobilière Stéphane Plaza à destination de Marcadiou, l'arrêt Verdun (en rouge) situé devant la pizzeria Dominos à destination du Cinéma, l'arrêt Verdun (en vert) situé devant le bar « Marilyn » à destination de la gare SNCF et l'arrêt Verdun (en orange) situé devant la banque le Crédit Agricole à destination de Ayguerote.



3. The City of Tarbes

© Service Communication Mairie de Tarbes

3.2 MAIN PLACES IN TARBES

MASSEY GARDEN



TARBES CITY HALL



BOWLING WITH INTERNATIONAL STUDENTS



ARSENAL AREA
(BARS, CINEMA, BOWLING, LASER
QUEST, RESTAURANTS)



VERDUN SQUARE



HUSSARDS MUSEUM



3. The City of Tarbes



© Service Communication Mairie de Tarbes

3.3 VISITING AROUND TARBES

CIRQUE DE GAVARNIE



© Pierre Meyer

LOURDES



© Lourdes

PIC DU MIDI DE BIGORRE



CAUTERETS
PONT D'ESPAGNE



ENIT MAP



Contacts

ENIT's dean	Prof. Jean-Yves FOURQUET	directeur@enit.fr
Head of International Relations Office (DRI)	Fabien DUCO	dridir@enit.fr
Head of school office, training and student life department (DFVE)	Baptiste TRAJIN	dfve-directeur@enit.fr
Coordinateur Académique International	Karl DELBE	iac@enit.fr
European Project Semester's coordinator	Mathieu CHARLAS	eps-responsable@enit.fr
Master Industry 4.0 coordinator	Hedi KARRAY	M I40 responsable@enit.fr
International Relations Office assistant	Karen SAUTET	incoming@enit.fr
Welcome Desk	Léonor Carrillo	welcomedesk@enit.fr
Sport teacher	Michel Pérez	michel.perez@enit.fr

- For health matters, contact our university nurse: Valérie Poirier at medecine@enit.fr
- You can also visit the website [Doctolib](https://doctolib.fr) to have an appointment with a medical specialist.

- Student mental health:

Mon Psy : Access to psychological support for all. To benefit from this service, contact a doctor(8 consultations reimbursed) <https://monpsy.sante.gouv.fr/>

NIGHTLINE (in French and English)Free telephone or night-time chat service for the student community and by student volunteers between 9pm and 2am (closed in summer) 05 82 95 10 11 <https://www.nightline.fr>

- **In case of emergency:**

Firefighters : 18

Police : 17

SAMU (Emergency Medical Assistance Service) : 15

European emergency number : 112

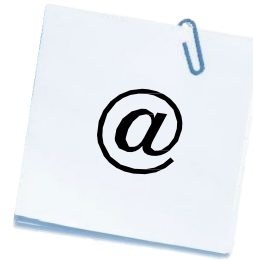
CONTACTS



For more information, please contact:



Ecole Nationale d'Ingénieurs de Tarbes
International Relations Office
Incoming students
47 avenue d'Azereix
BP 1629
F- 65016 TARBES Cedex
FRANCE



Karen SAUTET
incoming@enit.fr



+33 (0)5 62 44 27 50

Léonor CARRILLO
welcomedesk@enit.fr

International Relations Office
dri-direction@enit.fr